

# Prospectus 2025

Agriculture, Building and Civil and New venture Creation



## Contact Us

---

**P:** 079 510 4895 | 015 491 7047 | 015 004 2511

**F:** 086 653 2747 (086 690 5715)

**E:** [lucky@betterbest.co.za](mailto:lucky@betterbest.co.za) / [info@betterbest.co.za](mailto:info@betterbest.co.za)

**Physical Address :** 18 Charolais Street Mokopane, 0601

**Postal Address :** PO Box 200 Mokopane 0600

## Artisan Development Centre

---

Training in Short Skills Programs  
&

Full Qualification Programs  
Building and Civil Construction  
Agriculture  
New Venture Creation



[www.betterbest.co.za](http://www.betterbest.co.za)

# Index

Introduction	01
Short Skills Programs	02
Building and Civil Construction Skills Program	02-04
New Venture Creation skills programs	05
Agriculture Skills program	05
Hard Skills Welding (QCTO) Skills programs	06
Skills Program Price Structure	07
Full Qualification Programs	08-15
Price Structure	16

## INTRODUCTION

Better Best is a Private Skills Development Company that focus on Artisan Training, Short Skills Programs and Full Qualification Training  
The focus of the training is to provide an opportunity to candidates to obtain a Skill that can provide employment.

Short Skills Programs timelines are between 30 and 90 days. These programs are unit Standards based and accredited with the CETA, AgriSETA and SSETA.

Full Qualification programs are offered on Building and Civil Construction level 3. Various Agriculture qualifications and New venture Creation level 2 and 4. These programs are offered on level 2-4 and are 12 months per level.



# SHORT HARD SKILLS PROGRAMS



## NOTICE on Skills Programs:

All skills programs listed below are unit standard based and there for linked to legacy Qualifications No enrollments will be allowed after 24/06/2024

Better Best Short Skills programs focus on:

### A. Building and Civil Construction Skills programs

Entry Level requirement: Literacy and Mathematical proficiency on NQF level 2

## CONSTRUCTION SKILLS PROGRAM AVAILABLE:

### FORMWORKS SP-NC-BCC-L3-CEF-5-41

US	US DESCRIPTION	CREDITS
119457	Interpret and use information from text	5
119465	Write/present/sign text for a range of communication	5
14224	Fabricate erect and strip steel and timber formworks	12
14226	Fabricates, erect and strip formworks for straight walls, columns and bases	15
259604	Verify compliance to safety, health and environmental requirements in the workplace	4



# Construction SKILLS PROGRAM AVAILABLE:

## Painting SP-NCBCC-L3PNT-CEF-5-41

US	US DESCRIPTION
119465	Write/Present/text for a range of communication context
14493	Apply Special surface coating
259604	Verify compliance to Safety, Health and environmental Requirements in the workplace
261664	Erect, use dismantle access equipment for construction work
26166	Prime and Apply Paint to Surfaces

### CREDITS

5  
8  
4  
6  
18



## ROOF and SHEETING (SP-NC-BCC-L3-RSE-6-42)

US	US DESCRIPTION	CREDITS
119457	Interpret and use information from text	5
119465	Write/present/sign text for a range of communication	5
14676	Erect Roof Trusses	12
14679	Manufacture Timber Roof Trusses	15
259604	Verify compliance to safety, health and environmental requirements in the workplace	4
259664	Erect, use and Dismantle access equipment for Construction Work	6

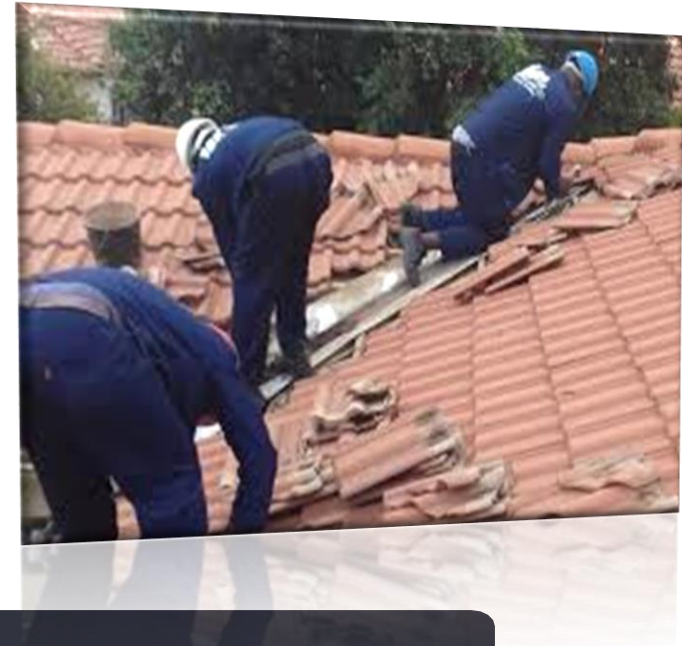




# Construction SKILLS PROGRAM AVAILABLE:

## Carpentry (SP-NC-BCC-L3-CARP-7-42)

US	US DESCRIPTION	CREDITS
119457	Interpret and use information from text	5
119465	Write/present/sign text for a range of communication	5
119472	Accommodate Audience and Context Needs in Oral/signed Communication	5
14679	Manufacture Timber Roof Trusses	15
259604	Verify compliance to safety, health and environmental requirements in the workplace	4
14679	Manufacture roof Trusses	6
243757	Prepare a Site for Ceiling and partition installation	13
261658	Identify, Use and Maintain Tools, Machines Equipment and Materials for Building and Civil Construction Activities	4



## Plastering (SP-NC-BCC-L3-CEF-PLST-5-44)

US	US DESCRIPTION	CREDITS
119465	Write/Present/text for a range of communication context	5
119457	Write/present/sign text for a range of communication	5
10002	Plastering Walls and Screed a Floor and Steps	15
261604	Verify compliance to safety, health and environmental requirements in the workplace	4
9969	Prepare for Plastering	15

# New Venture creation **PROGRAM AVAILABLE:**

Level

Level 2

Level 4

## SKILLS PROGRAM TITLE

MARKETING & SELLING  
BUSINESS PRINCIPLES  
FINANCIAL FOUNDATION

A NEW VENTURE ATTITUDE  
ECONOMICS AND BUSINESS PRINCIPLES  
PEOPLE MANAGEMENT

## Credits

47

45

46

48

70

35

# Agri Skills **PROGRAM AVAILABLE:**

Agri skills programs are unit standard based and can be custom fit based on the qualification listed below

- General Education and training Certificate: Horticulture; SAQA ID 49668 Level 1
- General Education and training Certificate: Poultry production; SAQA ID 49580 NQF Level 1
- National certificate: Farming; SAQA ID 20288 NQF Level 1
- National Certificate: Horticulture; SAQA ID 66589 NQF Level 2
- National Certificate: Mixed Farming; SAQA ID 48971 NQF Level 1
- National Certificate: Mixed Farming; SAQA ID 48977 NQF Level 2
- National Certificate: Poultry Production; SAQA ID 49582 NQF Level 1
- National Certificate: Poultry Production; SAQA ID 49578 NQF Level 3



**Coded Welder SP 210402**

**Modular Based Training**

**96 CREDITS**

**Metal Arc Welder SP 191209**

**Modular Based Training**

**40 CREDITS**

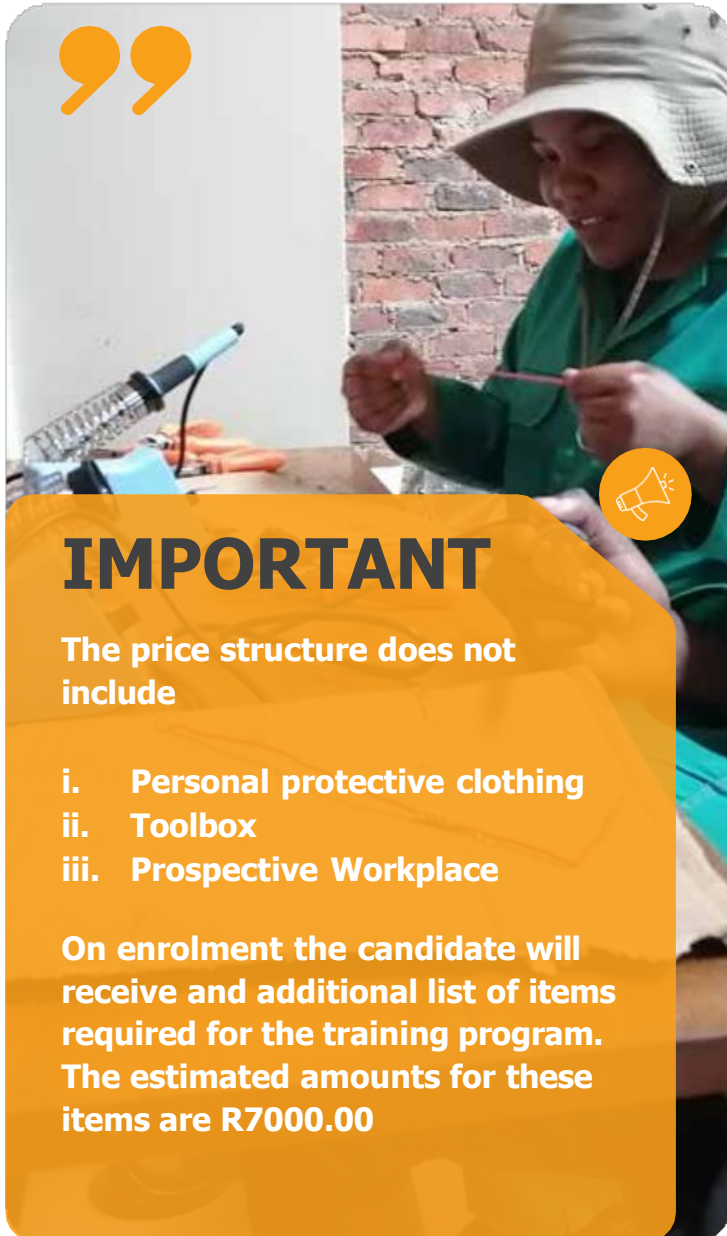
”

## **Additional Requirements:**

- **Personal protective clothing**
- **Toolbox**
- **Prospective Workplace**



# PRICE STRUCTURE



**IMPORTANT**

The price structure does not include

- Personal protective clothing
- Toolbox
- Prospective Workplace

On enrolment the candidate will receive and additional list of items required for the training program. The estimated amounts for these items are R7000.00

Skills program	Credits	Price
From Works (SP-NC-BCC-L#-CEF-5-41)	41	R 9 000.00
Painting (SP-NC-BCC-L3PNT-CEF-5-41)	41	R 4500.00
Roof and Sheeting (SP-NC-BCC-L3-CEF-RSE-6-42)	42	R 9 000.00
Plastering (SP-NC-BCC-L3-CEF-PLST-5-44)	44	R 9 000.00
Carpentry (SP-NC-L3_CEF-CARP-7-42)	42	R 9 000.00
Agri skills program (custom made) minimum credits 20	36	R 9000.00
New Venture skills programs		
• MARKETING & SELLING	47	R 9 000.00
• BUSINESS PRINCIPLES	45	R 9 000.00
• FINANCIAL FOUNDATION	46	R 9 000.00
• A NEW VENTURE ATTITUDE	48	R 9 000.00
• ECONOMICS AND BUSINESS PRINCIPLES	70	R 9 000.00
• PEOPLE MANAGEMENT	35	R 9 000.00



# FULL QUALIFICATION PROGRAMS

**NOTICE on Qualification:**  
**All legacy programs listed below will not be allowed to have an intake of candidates after 24/06/2026**

Better Best Qualification programs focus on

- General Education and training Certificate: Horticulture; SAQA ID 49668 Level 1
- General Education and training Certificate: Poultry production; SAQA ID 49580 NQF Level 1
- National certificate: Farming; SAQA ID 20288 NQF Level 1
- National Certificate: Horticulture; SAQA ID 66589 NQF Level 2
- National Certificate: Mixed Farming; SAQA ID 48971 NQF Level 1
- National Certificate: Mixed Farming; SAQA ID 48977 NQF Level 2
- National Certificate: Poultry Production; SAQA ID 49582 NQF Level 1
- National Certificate: Poultry Production; SAQA ID 49578 NQF Level 3

## Entry level Requirements

**Qualification**      **General Education and training Certificate: Horticulture; SAQA ID 49668**

Level

End date      2027-06-30

Entry level      It is assumed that learners are already competent in:

Requirements      Communication and Mathematical Literacy at NQF Level 3.

Recognition of prior learning:

This qualification can be obtained in part or wholly through the recognition of prior learning. The learner should be thoroughly briefed on the mechanism to be used and support and guidance should be provided. Care should be taken that the mechanism used provides the learner with an opportunity to demonstrate competence and is not so onerous as to prevent learners from taking up the RPL option towards gaining a Qualification.

Exit level requirements

1. Apply the principles of health and safety in the horticultural environment.
2. Understand the structure of plants and the functions of their various components.
3. Demonstrate an understanding of the necessity of water for plant growth.
4. Describe the amount of water to be applied at the most suitable frequency to ensure the healthy growth and development of plants.
5. Identify the soil types that commonly occur in landscaped areas.
6. Propagate ornamental plants from seed.
7. Conduct the care of ornamental seedlings.
8. Plant and establish ornamental plants from containers into open ground.
9. Mulch and enrich the soil in established landscapes.

## Additional Requirements:

- *Note that all written assessments requires an 80 % pass mark.*
- *Second attempts will be charge additionally.*
- *Practical assessments need a competent feedback to the candidate*
- *Logbooks should be submitted in order to be found overall competent on all qualification or skills programs*

# FULL QUALIFICATION PROGRAMS

## Entry level Requirements

### Qualification **General Education and training Certificate: Poultry production; SAQA ID 49580**

Level 1  
End date 2027-06-30

Entry level requirements Learners who would like to access this qualification should have demonstrated competency in Communication and Numeracy at ABET Level 3.

Recognition of prior learning:

The qualification may be achieved in part or as a whole through the Recognition of Prior Learning.

Exit level requirements

1. Recognize the various sectors within the poultry industry and the career paths that are available.
2. Identify the principles of health and safety in poultry production and create an awareness of the potential dangers in the workplace.
3. Demonstrate a basic understanding of the functions of the main external and internal body parts of poultry.
4. Show an understanding of the raw materials used in poultry diets.
5. Understand the role and procedures of bio-security and how these are applied in a poultry production facility.
6. Indicate the necessity of providing poultry with constant clean water for the maintenance of health and growth.
7. Show an understanding of the effects of environmental conditions on the health and productivity of poultry.
8. Demonstrate the practices and procedures for the cleaning of poultry buildings and equipment.
9. Recognise the signs of any abnormal behaviour or condition of poultry as an indication of a disease.

### Additional Requirements:

- *Note that all written assessments requires an 80 % pass mark.*
- *Second attempts will be charge additionally.*
- *Practical assessments need a competent feedback to the candidate*
- *Logbooks should be submitted in order to be found overall competent on all qualification or skills programs*

## Entry level Requirements

### Qualification

**National certificate: Farming; SAQA ID 20288**

Level	1
End date	2029-06-30
Entry level requirements	Learners who would like to access this qualification should have demonstrated competency in Communication and Numeracy at ABET Level Recognition of prior learning: The qualification may be achieved in part or as a whole through the

### Exit level requirements

- Recognition of Prior Learning.
1. Recognize the various sectors within the poultry industry and the career paths that are available.
  2. Identify the principles of health and safety in poultry production and create an awareness of the potential dangers in the workplace.
  3. Demonstrate a basic understanding of the functions of the main external and internal body parts of poultry.
  4. Show an understanding of the raw materials used in poultry diets.
  5. Understand the role and procedures of bio-security and how these are applied in a poultry production facility.
  6. Indicate the necessity of providing poultry with constant clean water for the maintenance of health and growth.
  7. Show an understanding of the effects of environmental conditions on the health and productivity of poultry.
  8. Demonstrate the practices and procedures for the cleaning of poultry buildings and equipment.
  9. Recognise the signs of any abnormal behaviour or condition of poultry as an indication of a disease.

### Qualification

**National Certificate: Horticulture; SAQA Id 66589**

Level	2
End date	2029-06-30

Entry level requirements	Learners who would like to access this qualification should have demonstrated competency in: Literacy and Numeracy at NQF Level 1. ID 119687: Demonstrate a basic understanding of the horticultural industry, NQF Level 1. Recognition of Prior Learning: The qualification may be achieved wholly or in part through the Recognition of Prior Learning and the qualification may be granted to learners who have acquired the skills and knowledge without attending formal courses providing they can demonstrate competence in the outcomes of the individual Unit Standards as required by the Fundamental, core and Elective areas stipulated in the Qualification and by the Exit Level Outcomes.
--------------------------	----------------------------------------------------------------------------------------------------------------------------------------------------------------------------------------------------------------------------------------------------------------------------------------------------------------------------------------------------------------------------------------------------------------------------------------------------------------------------------------------------------------------------------------------------------------------------------------------------------------------------------------------------------------------------------------------------------------------

### Exit level requirements

- An RPL process may also be used to credit learners with Unit Standards in which they have developed the necessary competency as a result of workplace and experiential learning.
1. Identify the different organisms of the plant kingdom and their uses in horticulture.
  2. Identify the different soil types and describe their uses in plant propagation and landscaping.
  3. Operate a manual irrigation system and schedule the applications to suit the plants water requirements.
  4. Utilise stem cuttings for the propagation of plants.
  5. Implement the appropriate care for ornamental plants.
  6. Identify ornamental plants commonly used in the workplace.



## Additional Requirements:

- Note that all written assessments requires an 80 % pass mark.
- Second attempts will be charge additionally.
- Practical assessments need a competent feedback to the candidate
- Logbooks should be submitted in order to be found overall competent on all qualification or skills programs

## Entry level Requirements



### Qualification

#### National Certificate: Mixed Farming; SAQA ID 48971

Level  
End date  
Entry level requirements

1  
2029-06-30  
It is assumed that a learner entering a programme leading to this qualification has achieved numeracy, literacy and communication equivalent to ABET 3.  
Recognition Of Prior Learning:  
This qualification may be achieved in part or in whole through the recognition of prior learning. Credit will be given to learning, which has already been acquired, through the appropriate process of assessment.

Exit level requirements

- 1.Exit Level Outcomes are divided into five categories of competencies, namely:
- 2.Fundamental Competencies
- 3.Agri-business
- 4.Good Agricultural Practices
- 5.Plant Production; and
- 6.Animal Production

### Qualification

#### National Certificate: Mixed Farming; SAQA ID 48977

Level  
End date  
Entry level requirements

2  
2029-06-30  
It is assumed that a learner entering a programme leading to this qualification has achieved numeracy, literacy and communication equivalent to NQF 1 and technical skills pertaining to agricultural activities equivalent to NQF 1.

Recognition of Prior Learning:

This qualification may be achieved in part or in whole through the recognition of prior learning. Credit will be given to learning, which has already been acquired, through the appropriate process of assessment.

Exit level requirements

1. Exit Level Outcomes are divided into five categories of competencies, namely:
2. Fundamental Competencies
3. Agri-business
4. Good Agricultural Practices
5. Plant Production; and
6. Animal Production

## Additional Requirements:

- *Note that all written assessments requires an 80 % pass mark.*
- *Second attempts will be charge additionally.*
- *Practical assessments need a competent feedback to the candidate*
- *Logbooks should be submitted in order to be found overall competent on all qualification or skills programs*

## Entry level Requirements



### Qualification

#### National Certificate: Poultry Production; SAQA ID 49582

Level

2

End date

2029-06-30

Entry level requirements

Learners who would like to access this qualification should have demonstrated competency in Communication and Numeracy at NQF Level 1.

Recognition of prior learning:

The qualification may be achieved in part or as a whole through the Recognition of Prior Learning.

Exit level requirements

1. Show an understanding of the structure of the poultry industry and the role it plays in the production of food for the population.
2. Indicate the principles and procedures of health and safety that are necessary in a poultry production facility.
3. Demonstrate an understanding of the basic anatomy and physiology of poultry.
4. Understand the various components that are used in poultry diets and the function of these in the promotion of health and growth.
5. Show an understanding of the dangers that microscopic organisms pose to bio-security in a poultry production facility and the rules and procedures that are required to minimize their occurrence.
6. Recognise the importance of providing constant clean water for the continued health of poultry.
7. Indicate the importance of monitoring the environmental conditions for the production and health of poultry.
8. Understand the procedures for cleaning a poultry house at the end of a production cycle and the preparation for the introduction new flock.
9. Recognize the conditions that can lead to the onset of poultry diseases and the role of vaccines to prevent and control these.

### Qualification

#### National Certificate: Poultry Production; SAQA ID 49578

Level

3

End date

2029-06-30

Entry level requirements

Learners who would like to access this qualification should have demonstrated appropriate levels of competence in Communication and Numeracy at NQF level 2.

Recognition of prior learning:

The qualification may be achieved in part or as a whole through the Recognition of Prior Learning process for the unit standards.

Exit level requirements

1. Recognize the importance of the poultry industry's contribution to the provision of good quality food for the population and the various sectors that are involved in the industry.
2. Show an understanding of the importance of adhering to the principles and procedures of health and safety to maintain a safe working environment.
3. Indicate the functions of the external features of poultry and the role that the various body systems play in the health and growth of birds.
4. Demonstrate an understanding of the components of various poultry diets and the nutrient values that these provide.
5. Show an understanding of the role that water plays in the digestive and metabolic processes and the use of water management practices to achieve high standards of health and production.
6. Indicate the means of monitoring and modifying the environmental conditions to create a favourable environment for health and optimal growth of poultry.
7. Identify the possible entry routes for disease-causing organisms onto a poultry farm, or the incubation areas of the hatchery, and the bio-security practices necessary to restrict the entry of these.
8. Understand the procedures for cleaning, disinfecting, fumigation and preparation of poultry houses for the introduction of a new flock.
9. Demonstrate the ability to compile reports, keep records and conduct basic documentation for poultry production.

## Additional Requirements:

- Note that all written assessments requires an 80 % pass mark.
- Second attempts will be charge additionally.
- Practical assessments need a competent feedback to the candidate
- Logbooks should be submitted in order to be found overall competent on all qualification or skills programs



## Entry level Requirements

### Qualification

**National Certificate: Building and Civil Construction**  
**SAQA ID 65409**

Level

3

End date

2029-06-30

### Entry level requirements

It is assumed that learners are already competent in the following:

Communication at NQF Level 2.

Mathematical Literacy at NQF Level 2.

Recognition of Prior Learning:

Pre-assessments in both the Fundamental and Core areas of learning associated with this qualification will be conducted on learners prior to entry into the qualification. Successful demonstration of competence against all criteria contained in unit standards, against which prior learning is measured, will culminate in the award of credits to the learner. Learners' will not be required to repeat learning in those areas where prior learning is recognised and accredited.

The Recognition of Prior Learning process will also be applied where learners', who have achieved this Qualification, wish to continue their further learning and enter other trades at NQF Level 3.

Access to the Qualification:

Access to the qualification is open, except where there are restrictions placed on learners, based on their physical ability to adhere to legal occupational health, safety and environment standards that may prevent them from gaining access to this qualification.

### Exit level requirements

1. Plan construction activities using mathematical principles.

- Range: Construction activities include Painting, Tiling, Plastering, Masonry, Joinery, Carpentry, and Roofing.

2. Communicate with relevant persons.

3. Plan construction activity.

4. Establish work area.

5. Execute construction activity.

- Range: Construction activities include Painting, Tiling, Plastering, Masonry, Joinery, Carpentry, and Roofing...



## Additional Requirements:

- *Note that all written assessments requires an 80 % pass mark.*
- *Second attempts will be charge additionally.*
- *Practical assessments need a competent feedback to the candidate*
- *Logbooks should be submitted in order to be found overall competent on all qualification or skills programs*

## Entry level Requirements

### Qualification

**National Certificate: New Venture Creation (SMME)**  
**SAQA ID 49648**

Level

2

End date

2027-06-30

### Entry level requirements

It is assumed that learners are competent in Communication and Mathematical Literacy at NQF Level 1.

Recognition of prior learning

The structure of this Unit Standard based Qualification makes the Recognition of Prior Learning possible. Learner and Assessor will jointly decide on methods to determine prior learning and competence in the knowledge, skills, values and attitudes implicit in the Qualification and the associated Unit Standards. Recognition of

Prior Learning will be done by means of an Integrated Assessment.

This Recognition of Prior Learning may allow for:

Accelerated access to further learning at this or higher levels on the NQF  
Gaining of credits for Unit Standards in this Qualification  
Obtaining this Qualification in whole or in part.

All recognition of Prior Learning is subject to quality assurance by the relevant ETQA or an ETQA that has a Memorandum of Understanding with the relevant ETQA.

### Exit level requirements

1. It is assumed that learners are competent in Communication and Mathematical Literacy at NQF Level 1.

2. Recognition of prior learning

3. The structure of this Unit Standard based Qualification makes the Recognition of Prior Learning possible. Learner and Assessor will jointly decide on methods to determine prior learning and competence in the knowledge, skills, values and attitudes implicit in the Qualification and the associated Unit Standards. Recognition of Prior Learning will be done by means of an Integrated Assessment.

4. This Recognition of Prior Learning may allow for:

5. Accelerated access to further learning at this or higher levels on the NQF

6. Gaining of credits for Unit Standards in this Qualification

7. Obtaining this Qualification in whole or in part.

8. All recognition of Prior Learning is subject to quality assurance by the relevant ETQA or an ETQA that has a Memorandum of Understanding with the relevant ETQA.



## Additional Requirements:

- *Note that all written assessments requires an 80 % pass mark.*
- *Second attempts will be charge additionally.*
- *Practical assessments need a competent feedback to the candidate*
- *Logbooks should be submitted in order to be found overall competent on all qualification or skills programs*

## Entry level Requirements

### Qualification

**Further Education and Training Certificate: New Venture Creation SAQA ID 66249**

8  
Level  
End date  
2027-06-30

### Entry level requirements

It is assumed that the learner has the following knowledge and skills:

Communication at NQF Level 3.

Mathematical Literacy at NQF Level 3.

Recognition of Prior Learning:

This Qualification makes the Recognition of Prior Learning possible, if the learner is able to demonstrate competence in the knowledge, skills, values and attitudes implicit in this Marketing Qualification. Recognition of Prior Learning will be done by means of an Integrated Assessment as mentioned in the previous paragraph.

This Recognition of Prior Learning may allow:

For accelerated access to further learning.

Gaining of credits towards a unit standard.

For full or partial recognition of the Qualification.

All recognition of Prior Learning is subject to quality assurance by the relevant accredited Education, Training, Quality, and Assurance Body and is conducted by a registered workplace assessor. Because the standards are only core and fundamental, these standards may have been acquired in a range of economic sectors and these will be recognized as appropriate.

Access to the Qualification:

There is an open access to this qualification, keeping in mind the "Learning Assumed to be in Place".

### Exit level requirements

1. Demonstrate an ability to identify and create a new venture.
2. Demonstrate knowledge of interpersonal skills required in a business environment.
3. Demonstrate an understanding of basic economics within an market economy.
4. Manage a new venture by applying business principles and techniques.
5. Demonstrate an understanding of the role of leadership and management.



## Additional Requirements:

- *Note that all written assessments requires an 80 % pass mark.*
- *Second attempts will be charge additionally.*
- *Practical assessments need a competent feedback to the candidate*
- *Logbooks should be submitted in order to be found overall competent on all qualification or skills programs*

# PRICE STRUCTURE

## Full Qualification program

## Price per Level

Building and Civil Construction  
Agri qualification  
New Venture creation

R21000.00 over 12month  
This amount is exclusive  
Stipends and  
accommodation



## IMPORTANT

The price structure does not include

- i. Personal protective clothing
- ii. Toolbox
- iii. Prospective Workplace

On enrolment the candidate will receive and additional list of items required for the training program. The estimated amounts for these items are R6000.00

